

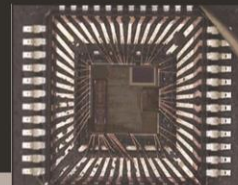
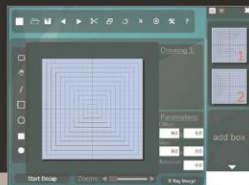
RADIANT

etch Laser 2

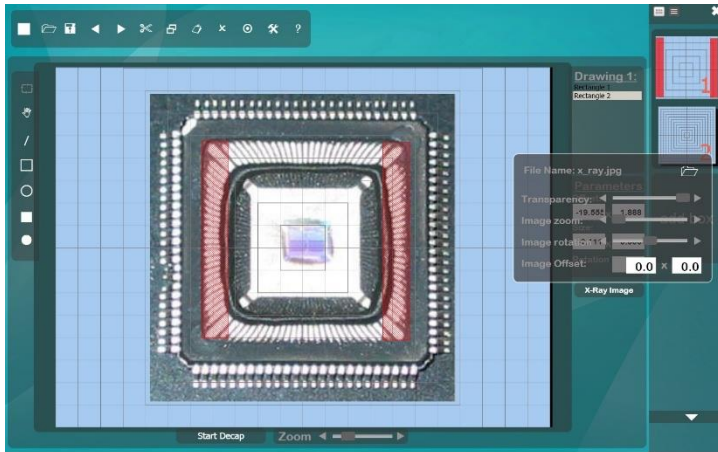


- ▶ Intuitive
- ▶ Easy to learn & use
- ▶ Start Decapping immediately
- ▶ Amazing solutions
- ▶ No Damage Wires
- ▶ On Copper, Gold, Silver/Gold wires

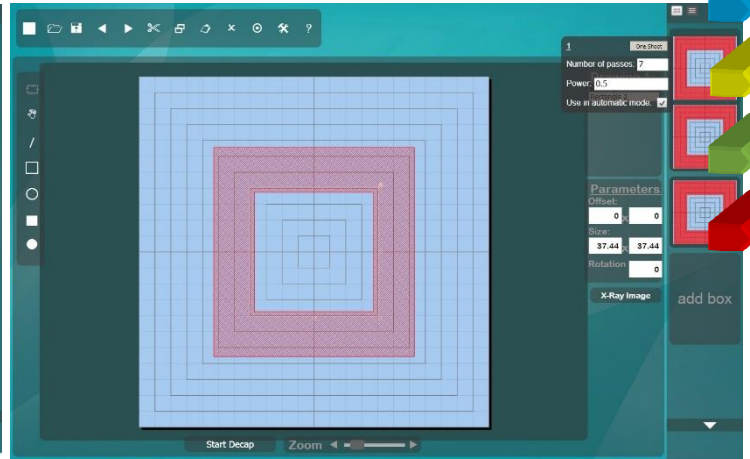
Offers Comprehensive Range of Products & Services that encompass all IC Decapsulation!



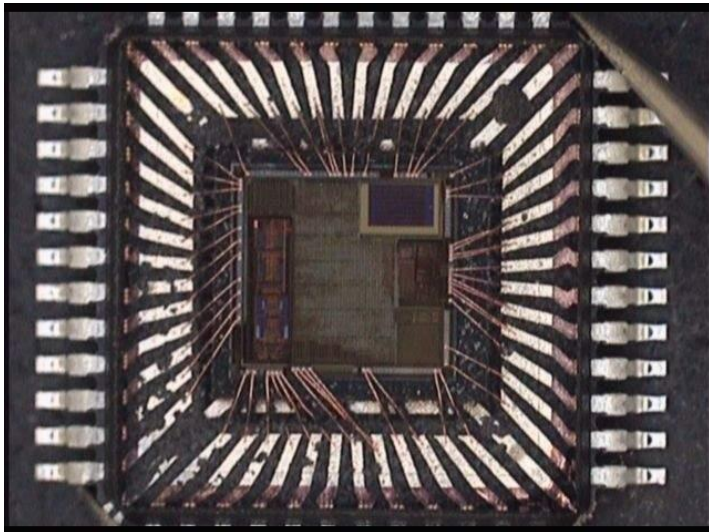
Extremely User-friendly, Easy to use user interface



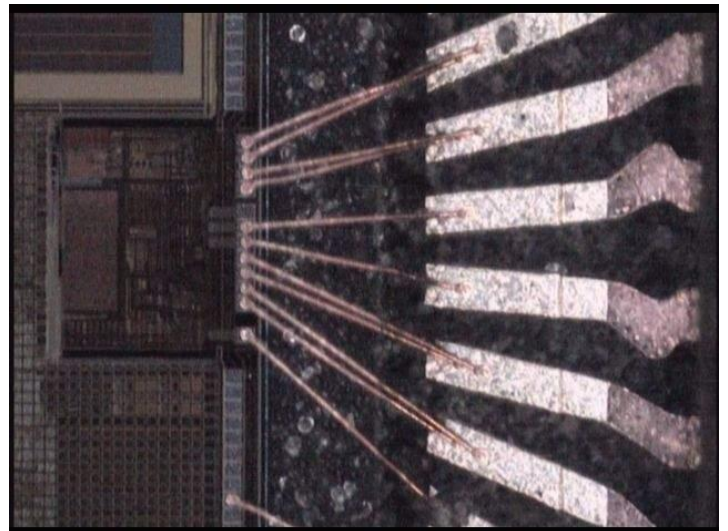
With Life image overlay



Easy to set laser perimeters



Completed After Acid Rinse



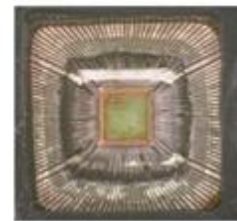
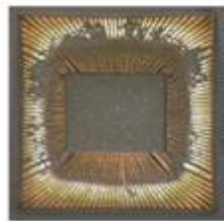
Copper Wires still in good

- High power laser system enables the complete decapsulation on IC packages to the exposure of Cu, Al, Au without damaging them.
- High efficient laser enables partial decap to silicon die surface for acid or chemical clean-up operations when post electrical verification required
- Isolated sample room to prevent cross contamination to other equipment parts to improve operational life span
- High resolution real time video during laser decap process
- Competitive function and cost performance!

etch Laser

World leaders in providing
automated decapsulator technology
and plastic etching

- * Using Laser ablation Technology
- * For Complex Shaped Cavities
- * It's Repeatable
- * Consistency in all devices
- * No Acid needed for 2nd bond
- * High Laser Safety Features
- * Intuitive
- * Easy to learn and use
- * Start Decaping on the same day it is installed
- * Overlay Image can be adjusted – transparency, image zoom, image rotation & offsets.
- * No Damage Wires
- * On Copper, Gold /Silver Wires
- * Leave 100microns of compound on die surface for final acid rinse
- * No acid rinse on Second bond
- * Will not damage silver on leadframe & mask on PCB
- * Smallest cavity at less than 500microns



Specification

Laser Details:	High Quality Laser
Laser Type	Air cooled 1064nm Fiber laser
Power	Average output power 20watt
Pulse Width	9ns-200ns selectable
Frequency	1Khz-1Mhz
Laser Quality	Pulse to pulse stability <3%
Scanning Galvo	XY scanning mirror galvanometer
Laser Lens	F Theta Lens for 110mmX110mm substrate
Air Cooled	Air cooled integrated controller
Class Safety:	Class 1 Laser Safety
Stage	Laser center manual adjustable stage
Interlocks	Safety interlocks on Doors
Fume and Dust	Fume and dust extractor
	Glass viewing window protects from laser radiation
Control Unit:	Windows®-based ablation software
Life Image	Image overlay for easy recipe setup
Software	Easy touch screen user interface
System size:	1064mm X 700mm X 400mm
Optics	Inline Video observation with live preview
Zoom Lens	18x Large Optical Zoom: 8mm-140mm FOV
Focus Aid	Laser Pointer focus Aid
Optional:	
Auto Stage	Auto stepping XY Stage

The Ever Centering chuck has an opening of 40mm X 40mm



It will always hold the sample at center

All cad templates are defaulted from the center of the chuck



Distributors: